

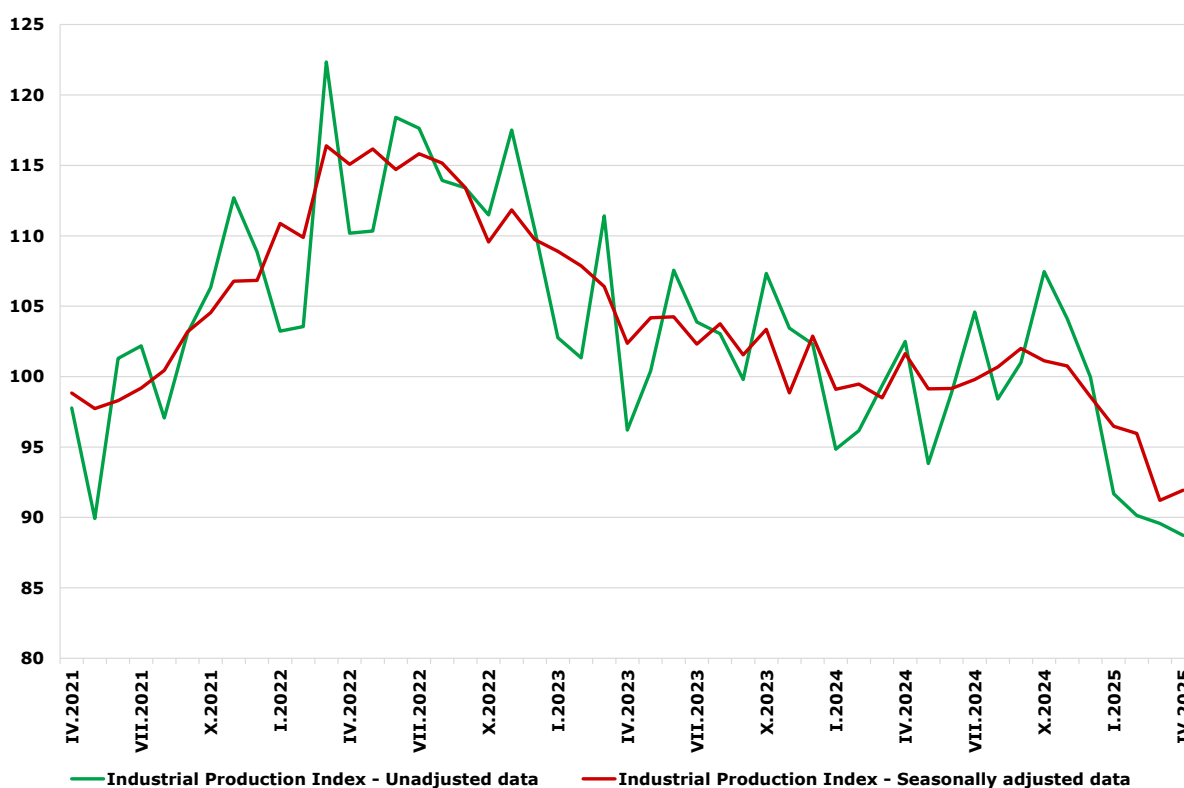


INDUSTRIAL PRODUCTION INDICES IN APRIL 2025

The Industrial Production Index increased by 0.8% in April 2025 compared to the previous month. The data are preliminary and seasonally adjusted.

In comparison with April 2024, a decrease of 10.4% was registered in the calendar-adjusted Industrial Production Index.

Figure 1. Industrial Production Indices (2021 = 100)



Monthly changes

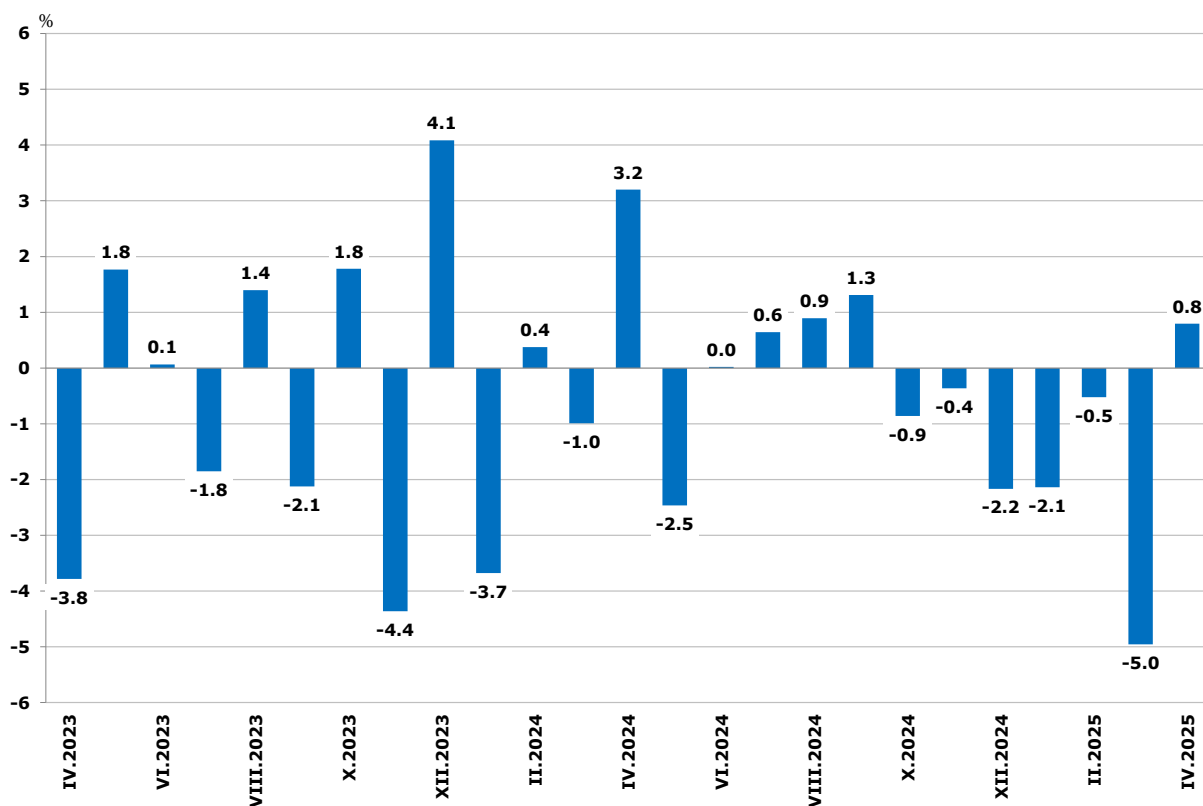
In April 2025, compared to the previous month, an increase was seen in the electricity, gas, steam and air conditioning supply - by 54.0%, while a decline was registered in the manufacturing - by 1.8% and in the mining and quarrying industry - by 1.6%.

In the manufacturing a decrease was reported in the manufacture of computer, electronic and optical products - by 16.8%, in the manufacture of other non-metallic mineral products - by 8.2%, and in the manufacture of furniture - by 7.8%.

More significant rise in the manufacturing was reported in the manufacture of other transport equipment - by 27.7%, in the manufacture of tobacco products - by 17.0%, and in the other manufacturing - by 16.3%.

INDUSTRIAL PRODUCTION INDICES IN APRIL 2025

**Figure 2. Changes of Industrial Production Indices
compared to the previous month
(Seasonally adjusted)**



Annual changes

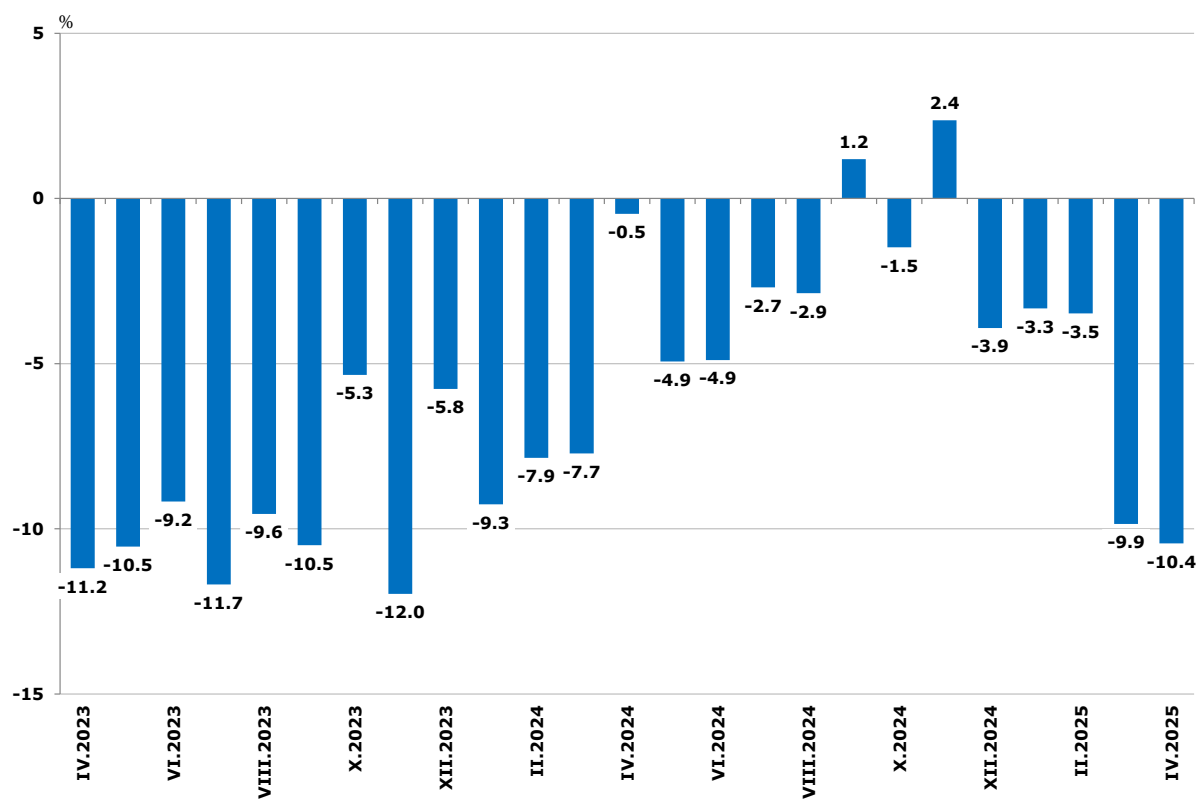
On an annual basis, a decrease of the Industrial Production Index was observed in the electricity, gas, steam and air conditioning supply - by 18.7%, in the manufacturing - by 7.0%, and in the mining and quarrying industry - by 3.9%.

In the manufacturing, a significant decline in production, compared to the same month of the previous year, was seen in the manufacture of basic metals - by 38.6%, and in the manufacture of paper and paper products - by 24.1%.

A rise was reported in the manufacture of tobacco products - by 49.8%, and in the manufacture of electrical equipment - by 20.3%.

INDUSTRIAL PRODUCTION INDICES IN APRIL 2025

Figure 3. Changes of the Industrial Production Indices compared to the same month of the previous year (Calendar-adjusted)



INDUSTRIAL PRODUCTION INDICES

IN APRIL 2025

Methodological notes

The monthly indices of industrial production are calculated in accordance with the requirements of Regulation (EU) 2019/2152 of the European Parliament and of the Council on European Business Statistics.

The Monthly Industrial Production and Industrial Turnover Indices measure changes in production and turnover values of industrial enterprises. This information can be used to access the current economic development and for short-term forecasts. Indices do not measure the actual production level; they aim to measure the average change in the value of production between two points in time. Indices are compiled based on information collected through a representative sampling survey on industrial enterprises. The sample covers enterprises with an annual turnover of more than 97% of the total turnover in the industry.

The Industrial Production Indices are calculated at a constant base year, that is to say they are weighted with the structure of the value added at factor costs in the base year.

Seasonal adjustment is a statistical method which eliminates the seasonal component of the time series.

Calendar adjustment is an adjustment for variations in the monthly data, caused by calendar effects, the different number of calendar and working days in the months, national holidays and outliers (for example, the presence of more non-working days in May could contribute to the decline in production in some activities).

Since July 2024, all dynamic rows have been recalculated based on 2021 as base year and have been published in IS Infostat.

INDUSTRIAL PRODUCTION INDICES

IN APRIL 2025

Annex

Table 1

Changes of Industrial Production Indices compared to the previous month¹

(Per cent)

Economic activities	NACE.BG - 2008	2024		2025			
		XI	XII	I	II	III	IV*
Industry	B_TO_E36	-0.4	-2.2	-2.1	-0.5	-5.0	0.8
Mining and quarrying	B	1.5	20.9	-19.3	-6.2	5.6	-1.6
Mining of coal and lignite	B05	186.3	63.9	-56.3	8.7	-37.4	15.8
Extraction of crude petroleum and natural gas	B06
Mining of metal ores	B07	-2.9	5.8	-9.9	-2.6	1.4	-3.0
Other mining and quarrying	B08	2.0	-8.4	8.3	-21.5	8.9	6.0
Mining support service activities	B09
Manufacturing	C	-0.1	-2.1	-1.8	-1.4	-0.4	-1.8
Manufacture of food products	C10	-6.7	-1.1	-3.9	-7.4	0.9	2.3
Manufacture of beverages	C11	-3.3	3.2	-0.5	-2.2	-4.9	2.0
Manufacture of tobacco products	C12	-15.1	14.3	14.4	6.7	-1.2	17.0
Manufacture of textiles	C13	-7.7	-0.4	-6.5	2.6	-1.0	-3.3
Manufacture of wearing apparel	C14	3.2	-16.1	0.6	-1.0	-4.7	4.4
Manufacture of leather and related products	C15	-0.5	-7.3	2.2	-4.2	-1.9	13.8
Manufacture of wood and of products of wood and cork, except furniture; manufacture of articles of straw and plaiting materials	C16	4.3	0.5	-2.2	-3.6	-2.4	-3.0
Manufacture of paper and paper products	C17	-2.3	-10.5	-9.8	3.2	-1.9	-0.9
Printing and reproduction of recorded media	C18	2.6	-3.3	-0.5	-3.2	6.2	-3.1
Manufacture of coke and refined petroleum products	C19
Manufacture of chemicals and chemical products	C20	11.1	-7.2	-4.4	-3.5	-0.5	-1.6
Manufacture of basic pharmaceutical products and pharmaceutical preparations	C21	-7.2	7.6	-2.9	-8.8	6.7	-4.8
Manufacture of rubber and plastic products	C22	5.7	-1.2	-4.5	-0.9	1.1	0.9
Manufacture of other non-metallic mineral products	C23	5.2	17.3	1.3	-12.8	4.1	-8.2
Manufacture of basic metals	C24	-4.3	-20.7	0.8	3.2	0.6	-3.4
Manufacture of fabricated metal products, except machinery and equipment	C25	-7.4	-2.9	14.6	-16.8	12.9	-6.8
Manufacture of computer, electronic and optical products	C26	6.5	-2.6	-15.3	17.0	12.4	-16.8
Manufacture of electrical equipment	C27	1.3	-7.8	2.0	-2.5	2.9	10.0
Manufacture of machinery and equipment n.e.c.	C28	-6.6	4.0	0.3	5.2	2.5	-3.6
Manufacture of motor vehicles, trailers and semi-trailers	C29	4.4	-6.1	17.9	-1.1	3.8	-1.4
Manufacture of other transport equipment	C30	-12.4	6.3	-1.3	18.6	-32.5	27.7
Manufacture of furniture	C31	-2.2	1.7	-0.8	12.4	7.9	-7.8
Other manufacturing	C32	-6.4	9.6	-17.0	20.0	-15.0	16.3
Repair and installation of machinery and equipment	C33	-19.8	6.0	11.9	-15.2	-3.8	4.9
Electricity, gas, steam and air conditioning supply	D	-8.0	-19.1	20.6	10.7	-43.0	54.0
Electricity, gas, steam and air conditioning supply	D35	-8.0	-19.1	20.6	10.7	-43.0	54.0

¹ Seasonally adjusted.

* Preliminary data.

„..“ - Confidential data.

INDUSTRIAL PRODUCTION INDICES

IN APRIL 2025

Table 2

Changes of Industrial Production Indices compared to the same month of the previous year²

(Per cent)

Economic activities	NACE.BG - 2008	2024		2025			
		XI	XII	I	II	III	IV*
Industry	B_TO_E36	2.4	-3.9	-3.3	-3.5	-9.9	-10.4
Mining and quarrying	B	-5.0	8.0	-4.5	-1.6	2.7	-3.9
Mining of coal and lignite	B05	-4.7	26.9	-18.7	22.4	-52.0	-62.8
Extraction of crude petroleum and natural gas	B06
Mining of metal ores	B07	-16.3	-4.1	-16.8	-14.8	-2.3	-17.8
Other mining and quarrying	B08	-0.1	-13.7	-1.5	-38.3	-25.7	-21.2
Mining support service activities	B09
Manufacturing	C	3.2	-1.2	-0.3	-5.6	-4.4	-7.0
Manufacture of food products	C10	-2.5	-3.5	-10.6	-16.7	-15.1	-14.0
Manufacture of beverages	C11	-12.6	-3.5	-7.7	-10.4	-10.4	-15.2
Manufacture of tobacco products	C12	3.5	17.6	61.0	44.5	20.5	49.8
Manufacture of textiles	C13	-22.4	-14.6	-17.7	-19.3	-14.2	-17.0
Manufacture of wearing apparel	C14	-2.1	-23.0	-17.5	-16.2	-19.3	-11.9
Manufacture of leather and related products	C15	-18.8	-21.8	-3.3	-13.7	-8.7	4.3
Manufacture of wood and of products of wood and cork, except furniture; manufacture of articles of straw and plaiting materials	C16	4.1	9.4	-6.9	-15.4	-12.7	-10.5
Manufacture of paper and paper products	C17	-4.0	-10.6	-21.6	-19.5	-17.2	-24.1
Printing and reproduction of recorded media	C18	3.5	-14.9	-6.9	-8.2	-1.1	-5.5
Manufacture of coke and refined petroleum products	C19
Manufacture of chemicals and chemical products	C20	20.1	5.6	-0.1	-6.0	-6.2	-14.9
Manufacture of basic pharmaceutical products and pharmaceutical preparations	C21	1.4	29.5	4.2	-17.3	-10.1	-8.1
Manufacture of rubber and plastic products	C22	0.3	-0.3	0.3	-0.1	-1.6	-3.1
Manufacture of other non-metallic mineral products	C23	13.0	11.8	32.0	-2.2	10.7	-3.9
Manufacture of basic metals	C24	-14.7	-36.2	-34.1	-36.0	-34.5	-38.6
Manufacture of fabricated metal products, except machinery and equipment	C25	23.9	23.9	27.4	5.6	25.2	7.9
Manufacture of computer, electronic and optical products	C26	17.4	17.8	-15.7	-14.3	24.7	-0.1
Manufacture of electrical equipment	C27	8.4	-8.5	1.2	-11.7	-4.5	20.3
Manufacture of machinery and equipment n.e.c.	C28	-4.2	-4.3	8.2	6.7	11.8	9.9
Manufacture of motor vehicles, trailers and semi-trailers	C29	-13.4	-14.6	-9.1	-6.5	5.4	-8.1
Manufacture of other transport equipment	C30	4.0	1.6	33.3	54.6	-27.8	6.1
Manufacture of furniture	C31	5.0	-6.7	-2.8	11.8	18.3	12.9
Other manufacturing	C32	-3.7	-4.2	-20.7	8.5	-6.6	10.8
Repair and installation of machinery and equipment	C33	-8.5	-9.0	9.4	-3.9	-0.9	-14.0
Electricity, gas, steam and air conditioning supply	D	11.7	-28.8	-13.6	11.2	-34.5	-18.7
Electricity, gas, steam and air conditioning supply	D35	11.7	-28.8	-13.6	11.2	-34.5	-18.7

² Calendar-adjusted.

* Preliminary data.

„..“ - Confidential data.

INDUSTRIAL PRODUCTION INDICES

IN APRIL 2025

Table 3

Industrial Production Indices (Seasonally adjusted, 2021 = 100)

NACE.BG - 2008	2024									2025			
	IV	V	VI	VII	VIII	IX	X	XI	XII	I	II	III	IV*
B_TO_E36	101.6	99.1	99.2	99.8	100.7	102.0	101.1	100.8	98.6	96.5	96.0	91.2	91.9
B	84.8	76.0	77.2	83.8	102.4	112.0	85.9	87.2	105.4	85.1	79.8	84.3	82.9
B05	47.0	38.7	46.7	58.8	48.4	42.6	19.3	55.2	90.5	39.5	43.0	26.9	31.2
B06
B07	106.4	101.2	100.0	99.6	111.2	118.3	107.8	104.7	110.8	99.9	97.3	98.6	95.6
B08	99.0	89.5	87.6	88.6	87.8	81.6	84.6	86.3	79.0	85.6	67.2	73.2	77.6
B09
C	105.9	103.0	105.6	104.9	106.9	105.9	107.5	107.4	105.2	103.3	101.8	101.4	99.6
C10	105.8	98.3	103.0	103.6	103.7	103.1	107.9	100.6	99.5	95.6	88.6	89.4	91.5
C11	112.8	102.4	106.9	106.0	105.4	109.2	102.9	99.5	102.7	102.1	99.9	95.0	96.9
C12	79.2	70.5	59.9	69.6	78.7	80.6	77.9	66.2	75.6	86.5	92.3	91.2	106.7
C13	62.1	63.9	66.1	62.5	58.0	72.3	61.0	56.3	56.1	52.4	53.8	53.3	51.5
C14	87.8	88.9	91.6	90.2	88.4	87.8	90.0	92.8	77.9	78.4	77.6	74.0	77.2
C15	67.5	66.1	62.7	61.9	62.7	59.3	67.2	66.8	61.9	63.3	60.6	59.5	67.7
C16	91.1	88.7	88.7	87.6	86.2	92.4	87.7	91.5	92.0	89.9	86.7	84.6	82.0
C17	95.7	93.4	94.2	99.9	91.5	97.6	93.4	91.3	81.7	73.7	76.1	74.7	74.0
C18	95.9	93.5	98.6	91.4	87.8	94.6	92.1	94.5	91.4	90.9	88.1	93.5	90.6
C19
C20	107.6	108.5	117.1	100.8	109.7	103.7	98.9	109.9	101.9	97.4	94.0	93.5	92.1
C21	116.1	117.7	115.2	114.3	125.7	108.6	121.0	112.2	120.8	117.3	107.0	114.1	108.7
C22	85.2	82.5	84.4	84.1	83.8	84.8	81.6	86.3	85.3	81.5	80.7	81.6	82.4
C23	97.6	86.1	90.0	94.5	85.8	86.5	91.0	95.7	112.3	113.7	99.1	103.2	94.8
C24	118.8	118.1	122.0	100.3	92.9	100.1	94.6	90.5	71.7	72.3	74.6	75.0	72.5
C25	153.6	145.8	145.2	164.3	175.0	162.1	185.4	171.7	166.8	191.1	159.0	179.5	167.3
C26	99.2	94.7	102.2	105.1	101.6	107.8	104.8	111.6	108.7	92.1	107.7	121.1	100.7
C27	92.2	91.3	96.8	98.8	103.0	98.9	103.5	104.8	96.6	98.5	96.1	98.9	108.8
C28	88.0	85.3	85.4	83.9	92.6	95.0	95.9	89.6	93.1	93.4	98.2	100.7	97.1
C29	126.8	114.8	106.7	116.9	116.5	105.5	98.0	102.3	96.0	113.2	111.9	116.2	114.6
C30	99.4	98.2	94.4	87.5	133.1	100.9	113.3	99.2	105.5	104.1	123.5	83.3	106.4
C31	79.7	80.0	76.1	75.3	81.5	79.4	81.3	79.5	80.8	80.2	90.1	97.3	89.7
C32	119.0	116.8	120.2	116.8	109.7	99.7	130.1	121.8	133.5	110.7	132.9	112.9	131.3
C33	126.2	114.8	113.7	110.6	110.8	121.9	133.9	107.4	113.8	127.4	108.0	103.9	109.0
D	85.6	90.7	69.2	86.2	71.5	89.2	84.4	77.6	62.8	75.8	83.9	47.8	73.6
D35	85.6	90.7	69.2	86.2	71.5	89.2	84.4	77.6	62.8	75.8	83.9	47.8	73.6

* Preliminary data.

„..“ - Confidential data.

INDUSTRIAL PRODUCTION INDICES

IN APRIL 2025

Table 4

Industrial Production Indices (Calendar-adjusted, 2021 = 100)

NACE.BG - 2008	2024									2025			
	IV	V	VI	VII	VIII	IX	X	XI	XII	I	II	III	IV*
B_TO_E36	98.8	94.8	101.3	103.1	98.6	102.7	106.0	104.9	101.7	90.8	90.7	91.8	88.4
B	78.3	70.8	74.1	80.8	101.3	119.5	95.8	92.5	119.3	82.6	75.1	81.8	75.3
B05	25.9	17.5	24.2	51.3	44.0	48.8	40.9	71.6	112.5	55.1	45.4	19.3	9.6
B06
B07	109.8	96.7	97.2	87.6	115.5	137.9	109.8	96.3	124.1	92.4	84.8	95.4	90.3
B08	96.7	92.4	93.7	92.4	90.9	86.0	95.7	96.1	78.6	62.8	52.7	69.6	76.1
B09
C	105.7	102.0	111.4	108.7	103.6	107.0	115.6	111.3	102.6	93.4	93.1	103.7	98.3
C10	102.6	97.2	103.9	103.2	104.8	106.7	119.7	103.4	103.0	87.3	77.0	88.7	88.2
C11	109.8	103.9	127.7	131.0	129.8	120.3	95.7	90.4	95.0	74.6	72.5	86.4	93.1
C12	85.4	80.9	72.5	87.8	84.7	90.1	82.5	64.3	73.8	52.9	63.4	96.4	127.9
C13	60.5	67.4	71.4	63.0	47.3	73.6	64.6	59.2	51.5	47.5	54.1	56.6	50.3
C14	79.1	81.9	98.0	102.0	82.5	87.0	92.4	95.5	73.8	80.9	77.3	72.4	69.6
C15	64.4	62.0	66.9	68.0	50.8	58.2	74.7	77.4	56.9	62.6	58.5	62.5	67.2
C16	91.7	92.8	93.3	93.6	83.5	95.4	93.9	97.6	86.3	76.1	77.4	85.6	82.1
C17	93.2	93.4	97.9	103.2	85.9	96.7	99.8	95.7	75.1	69.2	70.9	77.0	70.8
C18	94.2	93.4	101.9	90.8	81.1	91.3	98.9	107.0	96.9	81.8	79.5	95.6	89.1
C19
C20	109.4	107.6	120.8	101.5	104.6	102.3	99.4	112.4	100.9	91.7	89.2	101.8	93.1
C21	115.8	115.8	123.5	111.2	114.6	100.4	129.4	112.0	127.1	114.0	96.2	125.0	106.5
C22	84.4	82.7	88.7	87.9	79.0	87.6	89.9	88.0	77.4	74.7	75.5	84.6	81.8
C23	99.9	91.0	95.3	102.8	89.8	91.9	101.3	101.8	103.3	84.9	83.3	103.3	96.1
C24	119.3	119.5	123.3	97.3	83.1	95.6	97.8	92.8	65.1	70.9	71.9	80.3	73.2
C25	156.8	142.0	152.8	176.9	173.4	162.4	196.3	189.1	173.3	153.8	139.7	180.7	169.3
C26	97.8	92.2	107.3	109.0	89.8	108.5	117.4	116.6	104.3	85.5	104.7	127.9	97.7
C27	89.6	85.7	104.9	103.2	96.1	101.2	110.3	112.3	86.6	91.6	95.9	102.5	107.8
C28	90.0	84.2	90.9	87.4	81.5	96.7	104.7	94.1	89.5	83.7	95.5	107.7	99.0
C29	125.0	110.8	108.4	107.9	103.6	107.9	105.7	114.2	84.9	115.7	114.9	125.6	114.9
C30	104.1	99.7	104.3	89.0	130.0	97.0	123.5	97.1	89.7	81.5	124.3	81.7	110.4
C31	78.2	79.0	81.2	77.9	77.7	80.4	88.0	84.5	81.6	70.2	83.9	103.1	88.2
C32	115.3	114.4	137.5	117.7	110.0	103.7	144.1	130.0	122.4	95.2	117.3	113.2	127.8
C33	114.9	108.9	116.9	112.0	107.8	128.1	141.5	117.3	150.2	94.3	92.0	103.3	98.8
D	72.0	70.0	64.1	91.9	76.2	77.3	73.8	86.8	81.8	87.2	90.7	53.4	58.5
D35	72.0	70.0	64.1	91.9	76.2	77.3	73.8	86.8	81.8	87.2	90.7	53.4	58.5

* Preliminary data.

„..“ - Confidential data.